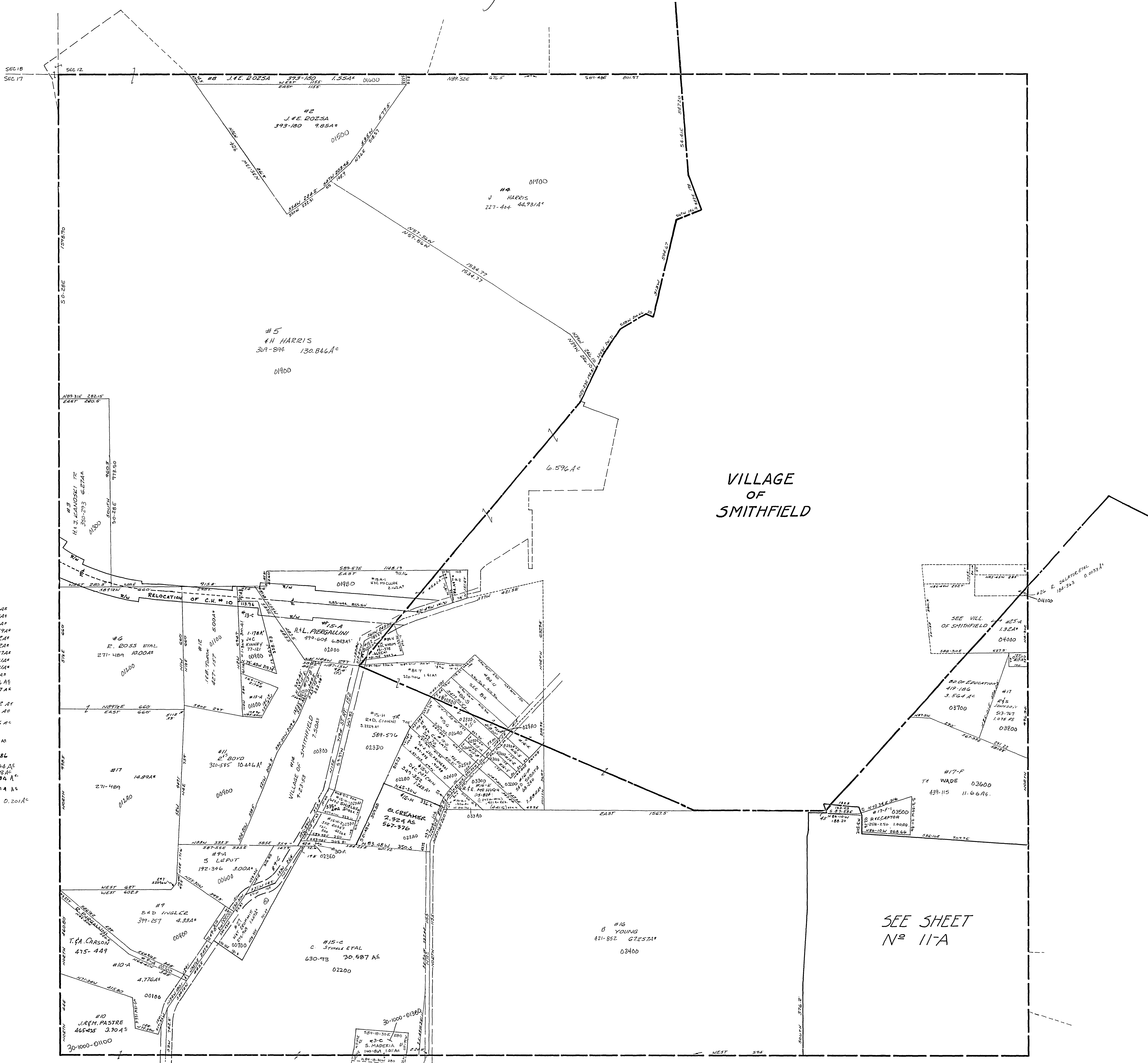
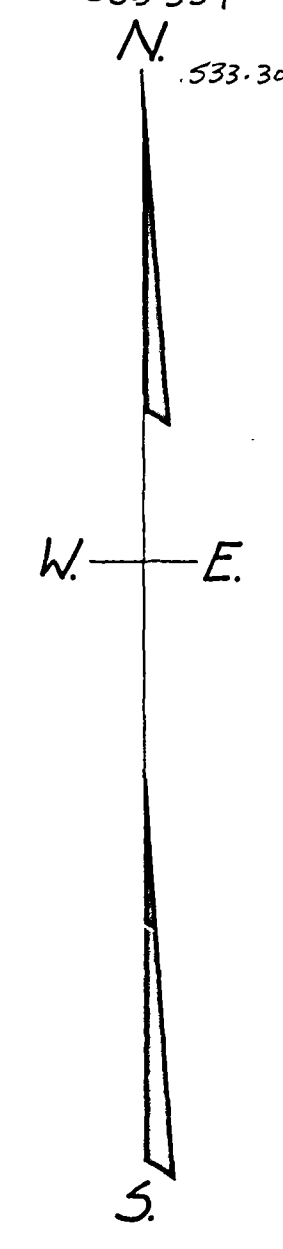


30-1100-



#7-A	PUGGALINI	8-11-24	.41A
#7-B	VILL OF SMITHFIELD	8-11-24	.24A
#7-C			.84A
#7-D	R.S. BOYD	300-585	.729A
#7-E	F. SINGLE	354-448	.72A
#7-F			.72A
#7-G	C.K. REYNARD	425-67	.637A
#7-H	L. MAE BIR	531-311	.201A
#7-I	J.E. STITT	275-227	.201A
#7-J	IMMEDIATE CHURCH	172-522	.175A
#7-K	E. GARRETSO	455-111	.276A
#7-L	THE VILL. OF SMITHFIELD	416-535	.247A
#10-A	C. STINDEL ETAL	130-93	.062A
#10-B	M. SHROPE	545-238	.326A
#10-C	E.B. DECESARE	647-308	.572A
#15-F	E.B. DECESARE	567-708	.113A
#15-G	D.A. KENNEDY	514-10	
#15-H	W. WHELAN ETAL	572-230	0.358A
#15-I	K.F. KOURINA	520-278	0.154A
#15-J	F. STINDEL	354-448	0.608A
#15-K	L. MCGURK	571-522	0.523A
#15-L	W.D. W. SHIELDS	586-354	.174A
#15-M	L. MAE BIR	533-301	0.201A



VILLAGE OF SMITHFIELD

SEE SHEET N^o 11-A

SMITHFIELD TWP
SEC. 11, T. 8, R. 3.
SCALE: 1" = 200'